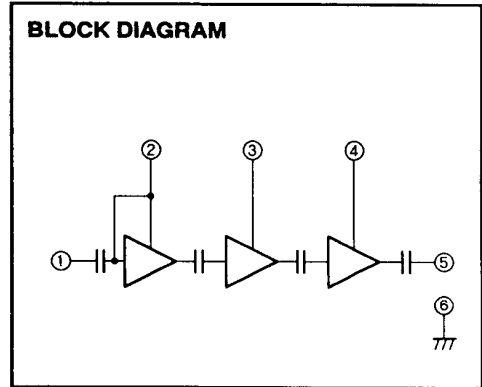
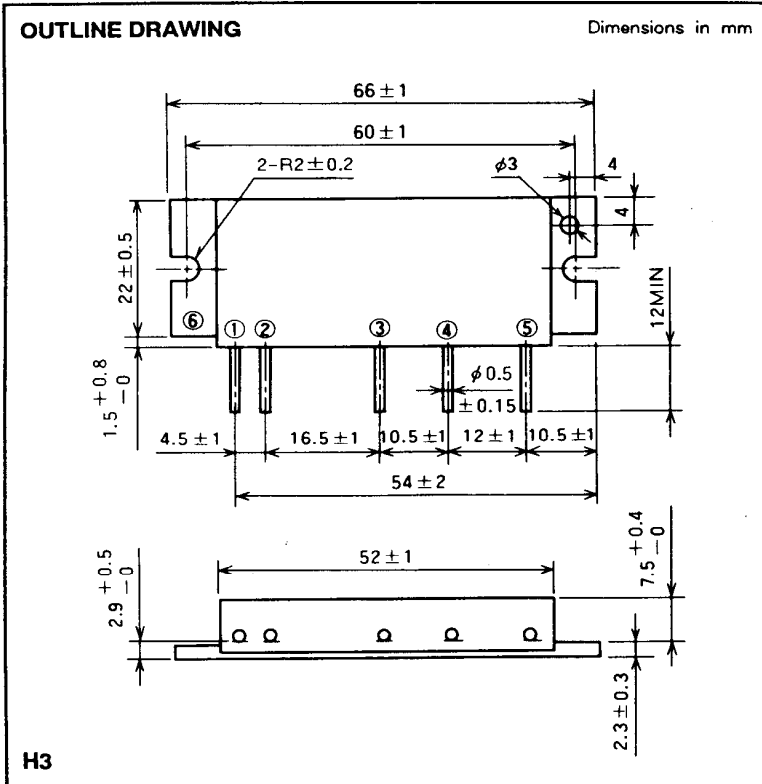


M57704SL

360-380MHz, 12.5V, 13W, FM MOBILE RADIO



- PIN :
- ① P_{in} : RF INPUT
 - ② V_{CC1} : 1st. DC SUPPLY
 - ③ V_{CC2} : 2nd. DC SUPPLY
 - ④ V_{CC3} : 3rd. DC SUPPLY
 - ⑤ P_o : RF OUTPUT
 - ⑥ GND : FIN

ABSOLUTE MAXIMUM RATINGS ($T_c = 25^\circ C$ unless otherwise noted)

Symbol	Parameter	Conditions	Ratings	Unit
V_{cc}	Supply voltage		17	V
I_{cc}	Total current		5	A
$P_{in(max)}$	Input power	$Z_G = Z_L = 50 \Omega$	0.4	W
$P_{O(max)}$	Output power	$Z_G = Z_L = 50 \Omega$	20	W
$T_{c(OP)}$	Operation case temperature		- 30 to 110	$^\circ C$
T_{stg}	Storage temperature		- 40 to 110	$^\circ C$

Note. Above parameters are guaranteed independently.

ELECTRICAL CHARACTERISTICS ($T_c = 25^\circ C$ unless otherwise noted)

Symbol	Parameter	Test conditions	Limits		Unit
			Min	Max	
f	Frequency range		360	380	MHz
P_o	Output power	$P_{in} = 0.2W$	13		W
η_T	Total efficiency	$V_{cc} = 12.5V$	35		%
$2f_o$	2nd. harmonic	$Z_G = Z_L = 50 \Omega$		- 30	dBc
ρ_{in}	Input VSWR			2.8	-
-	Load VSWR tolerance	$V_{cc} = 15.2V,$ $P_o = 14W$ (P_{in} : controlled) Load VSWR=20:1 (All phase), 2sec. $Z_G = 50 \Omega$	No degradation or destroy		-

Note. Above parameters, ratings, limits and conditions are subject to change.