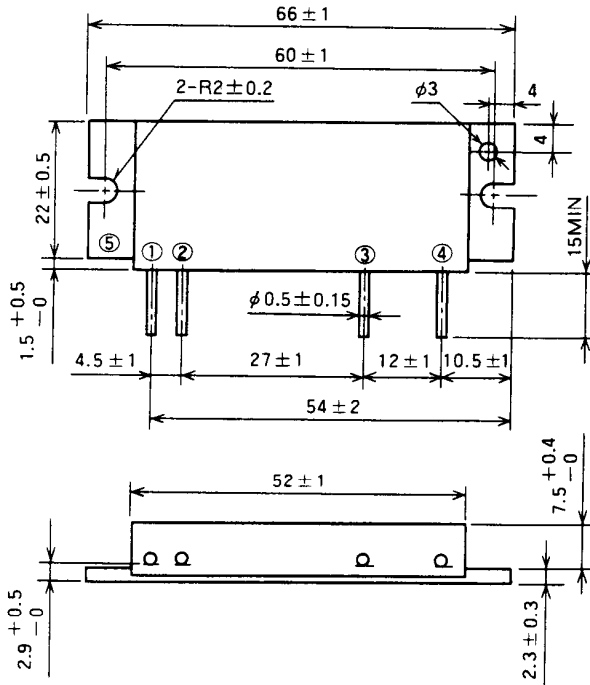


# M67741H

150-175MHz, 12.5V, 30W, FM MOBILE RADIO

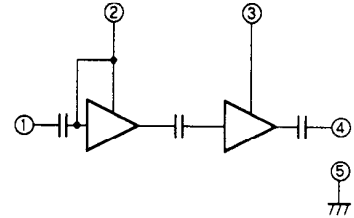
## OUTLINE DRAWING

Dimensions in mm



H2

## BLOCK DIAGRAM



PIN :

- ① Pin : RF INPUT
- ② VCC1 : 1st. DC SUPPLY
- ③ VCC2 : 2nd. DC SUPPLY
- ④ Po : RF OUTPUT
- ⑤ GND : FIN

## ABSOLUTE MAXIMUM RATINGS (T<sub>C</sub> = 25 °C unless otherwise noted)

Symbol	Parameter	Conditions	Ratings	Unit
V <sub>CC</sub>	Supply voltage		17	V
I <sub>CC</sub>	Total current		7	A
P <sub>in(max)</sub>	Input power	Z <sub>G</sub> = Z <sub>L</sub> = 50 Ω, V <sub>CC1</sub> ≤ 12.5V	0.5	W
P <sub>o(max)</sub>	Output power	Z <sub>G</sub> = Z <sub>L</sub> = 50 Ω	35	W
T <sub>C(OP)</sub>	Operation case temperature		- 30 to 110	°C
T <sub>stg</sub>	Storage temperature		- 40 to 110	°C

Note. Above parameters are guaranteed independently.

## ELECTRICAL CHARACTERISTICS (T<sub>C</sub> = 25 °C unless otherwise noted)

Symbol	Parameter	Test conditions	Limits		Unit
			Min	Max	
f	Frequency range	P <sub>in</sub> = 0.2W V <sub>CC</sub> = 12.5V Z <sub>G</sub> = Z <sub>L</sub> = 50 Ω	150	175	MHz
P <sub>o</sub>	Output power		30		W
η <sub>T</sub>	Total efficiency		40		%
2f <sub>o</sub>	2nd. harmonic			- 25	dBc
3f <sub>o</sub>	3rd. harmonic			- 30	dBc
ρ <sub>in</sub>	Input VSWR			3.3	-
-	Load VSWR tolerance	V <sub>CC</sub> = 15.2V P <sub>o</sub> = 30W (P <sub>in</sub> : controlled) Load VSWR ≥ 20:1 (All phase), 2sec. Z <sub>G</sub> = 50 Ω	No degradation or destroy		-

Note. Above parameters, ratings, limits and conditions are subject to change.

